

Kerri Weller

Two - one day Workshops July 8th and 9th 2017

The Manotick Art Association will be offering two one-day Figure Drawing workshops with Kerri Weller on;

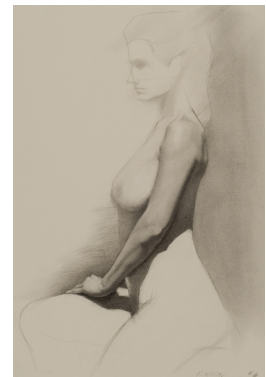
1. Saturday, July 8, 2017 from 9:00am to 4:00pm
2. Sunday, July 9, 2017 from 9:00am to 4:00pm

About the Artist

Kerri Weller is a contemporary artist and art teacher, specializing in realistic, classical paintings. She has taught art classes at the Ottawa School of Art, the Canadian Museum of Nature, Algonquin College and Nepean Visual Arts Centre. Kerri is a graduate of the Ontario College of Art and the University of Toronto's medical illustration program and was trained as a graphic designer and medical illustrator.

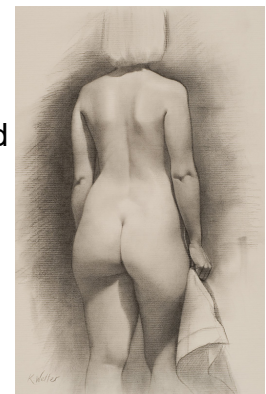
Kerri's work is in the permanent collection of the Hunt Institute for Botanical Documentation. Her paintings have been juried into 5 International Exhibitions of the American Society of Botanical Artists. She has twice been selected as a Still Life Finalist in the prestigious Art Renewal Centre's International ARC Salon.

Kerri's paintings bring together the disciplines of art and science to create precise and graceful plant and figure portraits. Her style is characterized by classical techniques in oil, watercolour and pencil, a strong design aesthetic, scientific accuracy and attention to detail.



About the Workshops

During these workshops Kerri will guide participants step by step through the drawing process, from the initial gestures to a highly finished drawing. Techniques to represent the human figure realistically will be emphasized as participants draw from the undraped model. Short gestures will be combined with long poses. Discussions will include setting up the model for a long pose, lighting and emphasizing a system of working that ensures success. All levels welcome.



Register now for either the Saturday or Sunday one-day workshop session with Kerri Weller. Both sessions will be held at Ann Gruchy's studio in Kars. We will have a live model both days and we will be sketching from

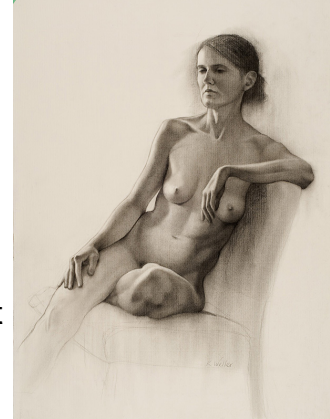
easels that are available at the studio - participants are welcome to bring their own easel.

The cost for each one day session is \$85.00 per participant. We require a minimum of 8 participants each session with a maximum number of 12 participants per session.

Registration

To register, please email Richard Pell at richardpell@rogers.com or contact him at 613 491-0420 identifying which day you are interested in participating. The registration deadline is May 25th; we will assign spaces on a first come first serve basis and maintain a waiting list. The Registration fee is non-refundable after June 10th unless a participant on the waiting list is identified to replace you.

Payment can be made via e transfer, Pay Pal or via credit card at our May 2nd meeting - cash and cheques are also accepted.



Workshop Details

Location will be Ann Gruchy's Art Studio located at 1622 Roger Stevens Drive, Kars ON

Cost is \$85.00 per participant per workshop.

Registration by May 25th, 2017 with richardpell@rogers.com If space is available you can apply up to the end of June.

Payment Options: You can pay treasurer@manotickart.ca via Pay Pal or send a cheque made out to Manotick Art Association c/o Richard Pell at 250 Cairnsmore Circle, Nepean K2J 0G5 made out to MAA.

Time: 9:00 AM – 4:00 PM. both days with 1/2 lunch mid day and mini breaks morning and afternoon (cookies will be available)

Lunch: Either bring your own lunch or head to the closest restaurant in North Gower called Marlborough for a quick lunch. There is a small refrigerator and a hot plate at the Studio for our use no microwave is available.

Breaks: There is a kettle and a Keurig Coffee maker please bring your own tea bags, instant coffee or Kcups. Bottled water is available.

Studio Rules: No oil or acrylic paint is to be put down the sink and plastic should cover your worktable space. If you have some plastic to cover your work space please bring it along.

Set-up: We will have easels set up for each individual. If you want to work with an easel on a table or if you are bringing a floor easel please advise.

Subject Matter: A professional live model will be available from 9:30 AM until 3:30 PM. Short gestures will be combined with long poses. Discussions will include setting up the model for a long pose, lighting and emphasizing a system of working that ensures success.

Materials for Drawing:

- Drawing Board – 18” x 24”
- 2 Drawing clips - to hold your paper in place on the drawing board
- Drawing Paper- 18” x 24” preferred size - Manila paper or newsprint, plus a good quality paper
such as Canson Drawing Paper - pad or sheets
- Graphite pencils - HB, 2B, 4B. Derwent is a good brand
or Charcoal pencils - Hard, medium and soft. General's is a good brand.
- Conte sticks – black or charcoal (Optional)
- Kneaded Eraser and hard white eraser
- X-acto knife and sandpaper - fine grade for sharpening pencils

More Information: You can also check out Kerri Weller's website at
www.kerriweller.com

Hope to see you there!